

Softpanel 2 Quickstart

The soft panels use the device (index) numbers of the source and destination tables based in the SC4/SC400 controller config that the panels are connected to via Ethernet. The following procedure is to be used for properly configuring and connecting the soft panels to the SC4.

NOTE: The SC4 must be running on software v1-7-1 with UCON v3-5-1. If this is not what your system is running on and if you have not already done so, follow the steps found in section 2 of the System Installation Guide, which will show you how to upgrade your system.

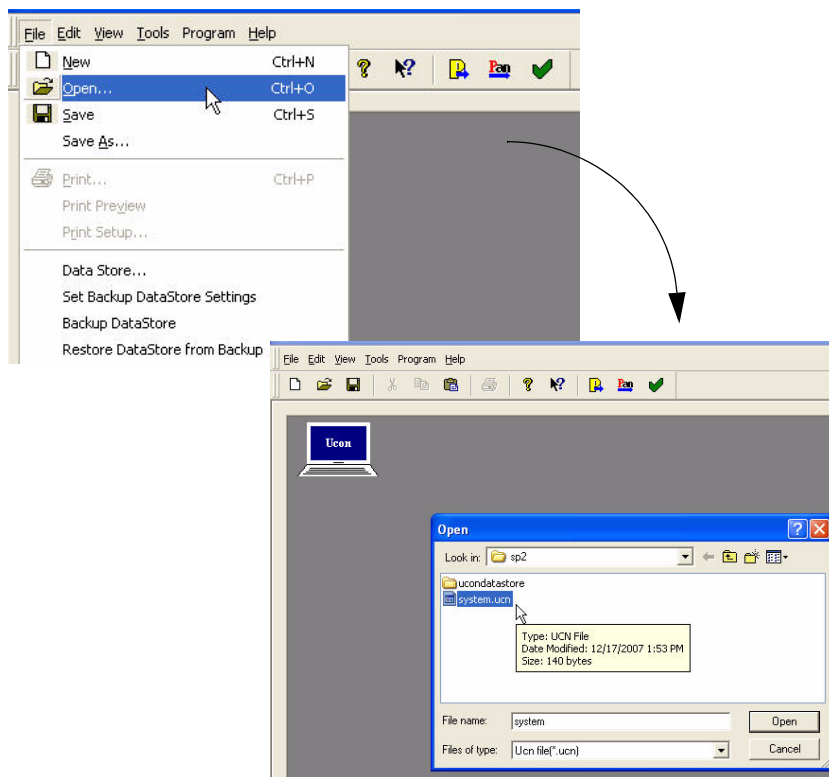
SP2 installation

1. Open windows explorer
2. Locate the directory release-softpanel2 inside the install2020 folder. (USI Software CD).
3. Double-click the setup.bat file. This installs softpanel 2 on the local PC's hard drive (c:\usi\softpanel2)

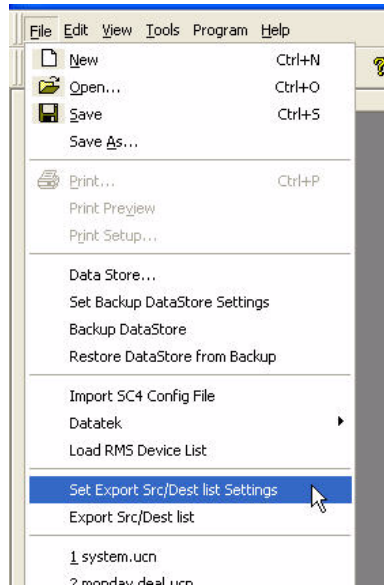
UCON Export

All Sources and Destinations located within the current U-CON Datastore must be introduced to the SoftPanel 2 configuration. These will be the same Sources and Destinations that were sent to the SC-4/SC-400 controller via U-CON.

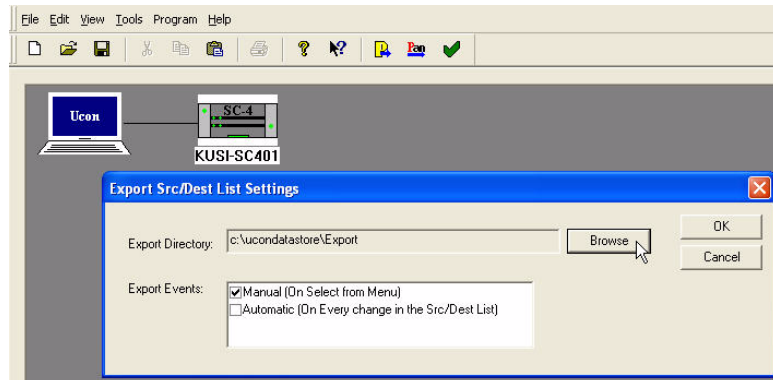
1. Start UCON, locate, then open the current datastore.



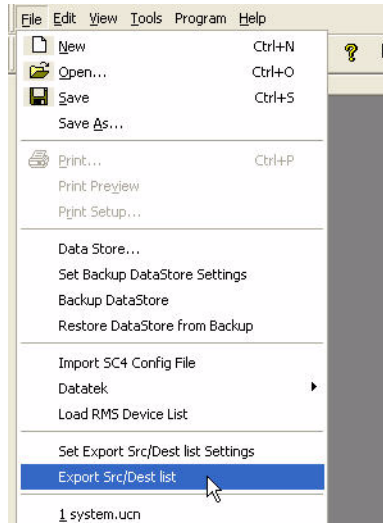
2. Select FILE->Set Export Src/Dest List Settings



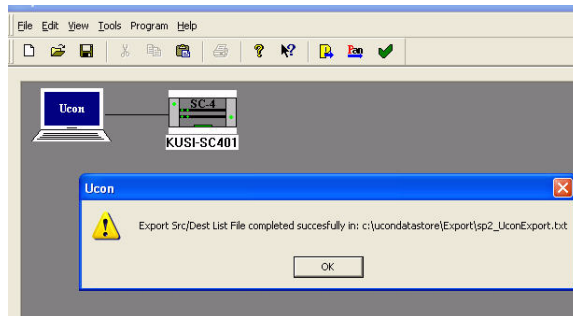
3. Select Browse and select a directory to export the list to (the default location is c:\ucondatastore\Export).



-
4. Select FILE->Export Src/Dest List. This generates a file in the export directory.



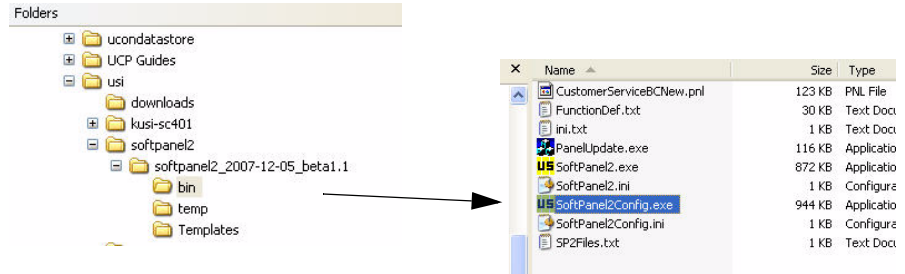
You will see the following dialog when the operation is complete.



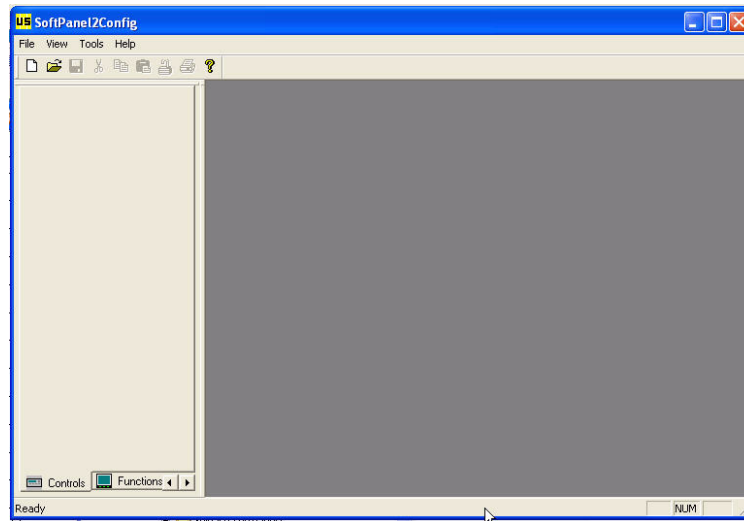
This completes the U-CON portion of this exercise. U-CON is not required for further SoftPanel 2 operation, and can be closed at this time.

SP2 Config Setup/config

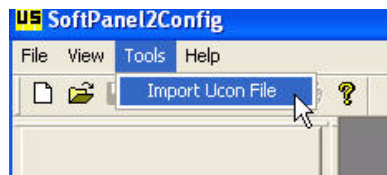
1. Double-click SoftPanel2Config.exe. This is located in the bin folder, which can be found in the recently created SoftPanel2 directory (c:\usi)



The following will appear:



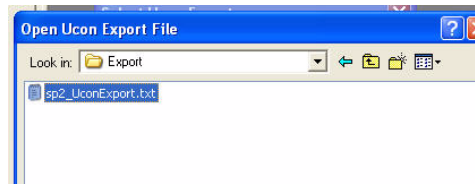
2. From the **Tools** menu, select *Import Ucon File*.



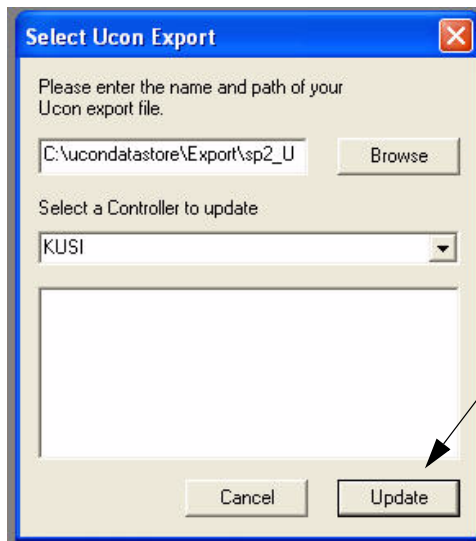
3. Select BROWSE in the dialogue window.



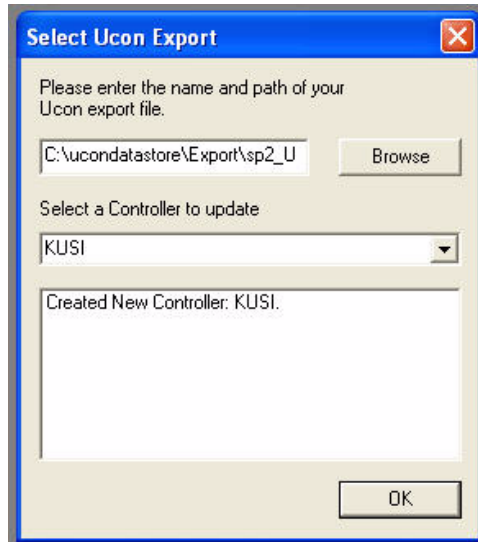
4. Change to the directory you exported the UCON data to and select the ucon export file.



5. In the *Select a Controller to Update* input box, type the name of the controller (ex KUSI), then click **Update**. This will create a new controller directory in softpanel2. (Example c:\us\softpanel2\KUSI).



This will complete the process.

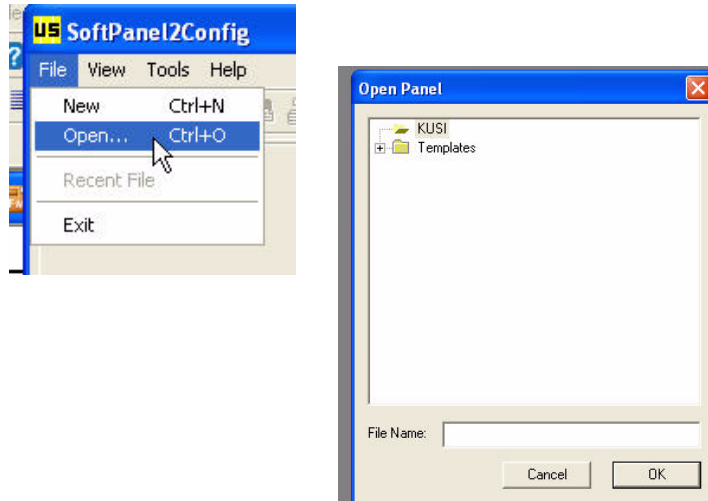


SP2 Panel Creation

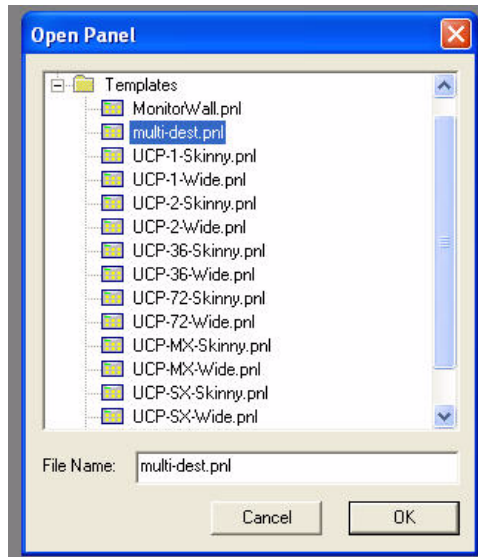
In this part of the exercise, you will create a ready-to-use panel from an existing template. This template, along with many other usable layouts are located in a pre-developed folder. These steps will familiarize you with the process. You can apply any one of the panels to your own operation, or create a new one by selecting **New** from the *File* menu.

1. Double-click SoftPanel2Config.exe (if it is not already running.) This is located in the bin folder, which can be found in the recently created SoftPanel2 directory (c:\usi). *This is the same procedure as step one above.*

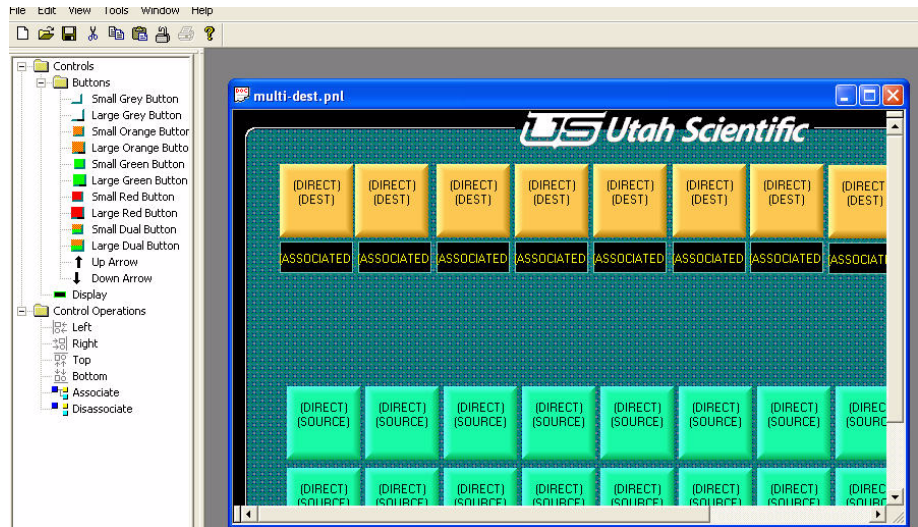
2. Select FILE->Open, then open the TEMPLATES entry shown in the dialogue box.



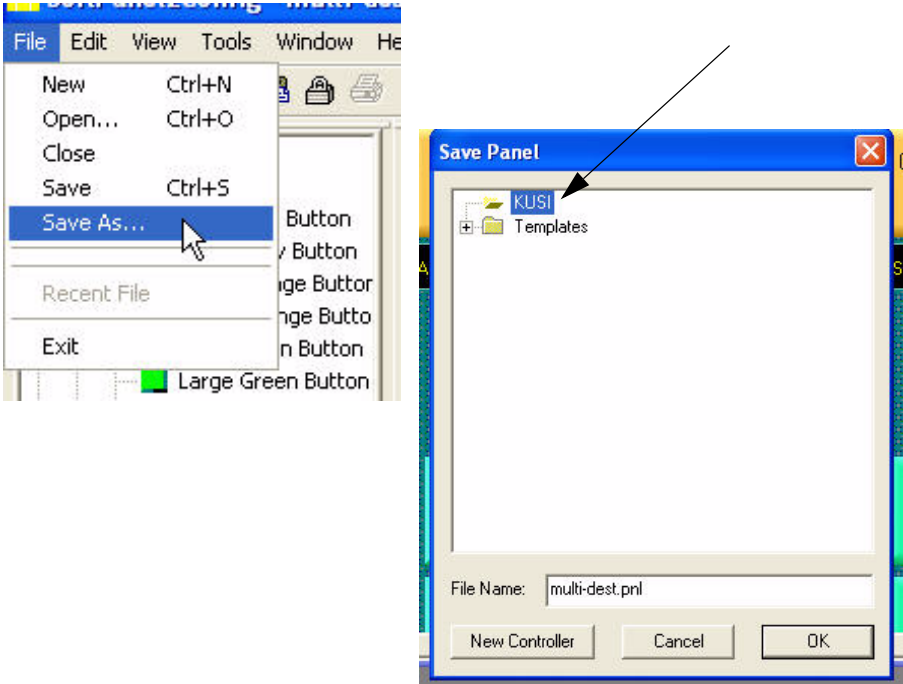
3. Double-Click the MULTI-DEST entry under TEMPLATES.



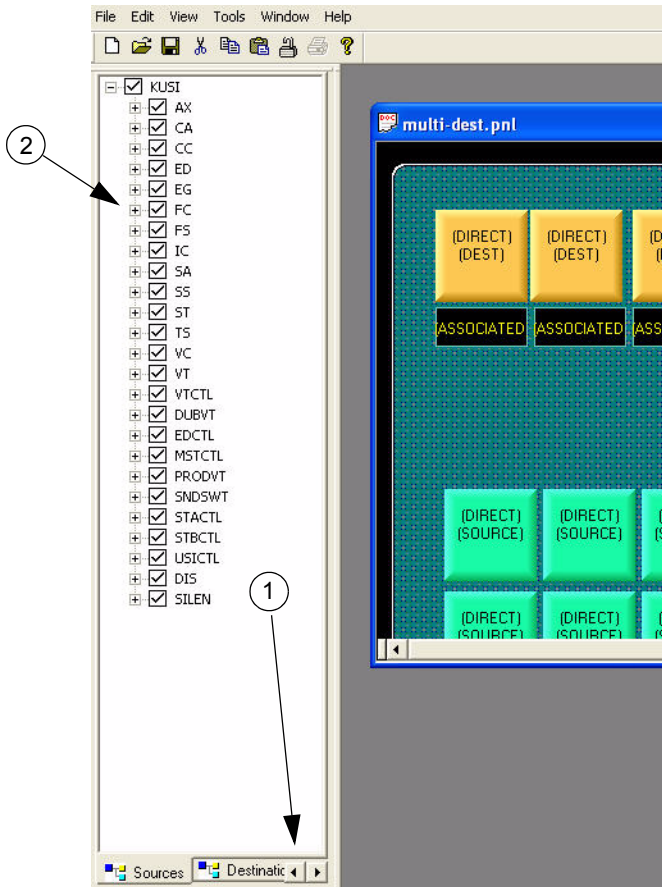
Your screen should appear as follows:



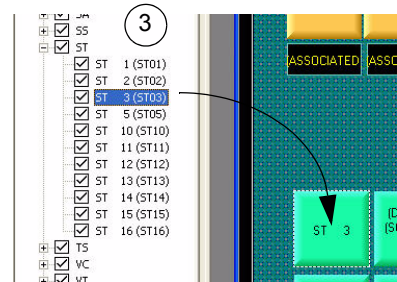
4. Select FILE-SAVE AS, and save the multi-dest to the controller directory.



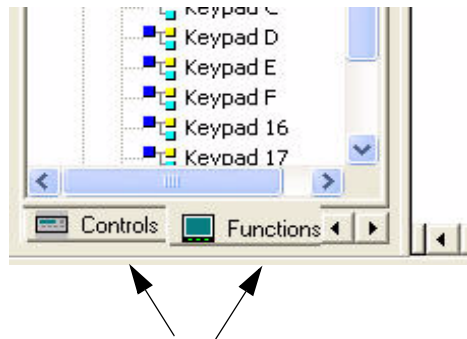
5. Add Sources/Destinations using the lower-left hand window by selecting the Sources/Destinations tabs and then dragging them onto the buttons.



1. Sources and Destination tab view
2. Click + for expanded view
3. Drag Source or Destination to button



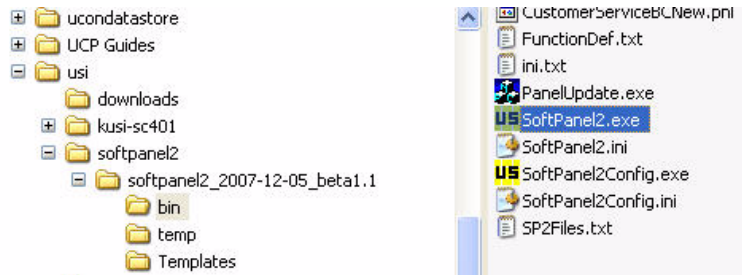
You can use any button on the panel (above); or modify any one for your particular use by using the Control and Function sections (tabs) in the lower left corner of the interface.



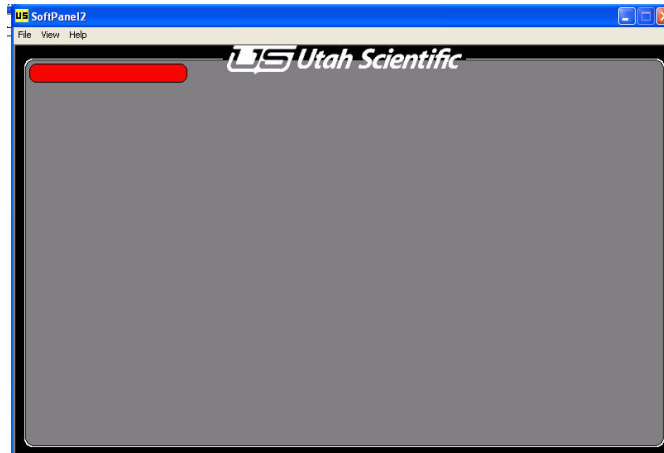
6. When finished, save the panel back to the sc4 controller area.
Repeat Step 4 (above).

SP2 Panel Usage

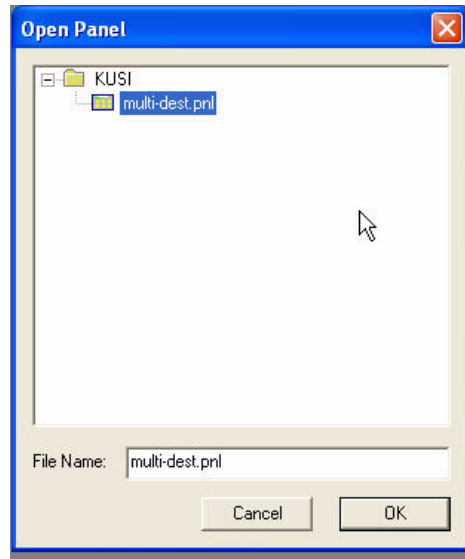
1. Double-click `SoftPanel2Config.exe` (if it is not already running.)
This is located in the bin folder, which can be found in the recently created `SoftPanel2` directory (`c:\usi`).



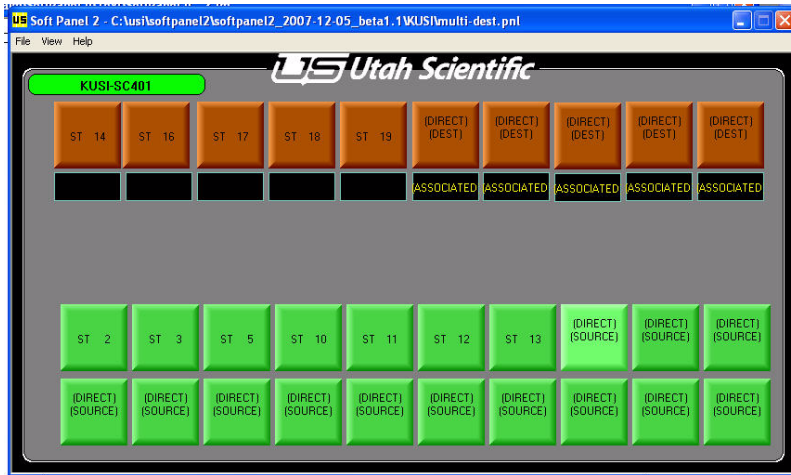
The following screen will appear:



2. Select **File**->*Open Panel*, click your controller's folder (created above) and select the MULTI-DEST item. Click OK.

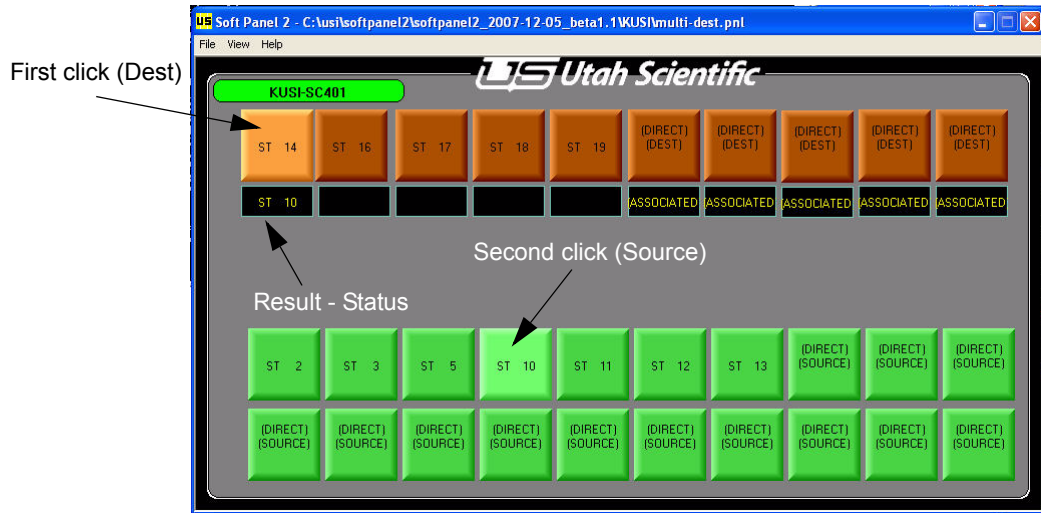


The following screen will appear:



The cell in the upper-left corner should be green, indicating a successful connection to the controller. Red indicates a bad network connection between the SoftPanel's PC and the SC-4.

3. Select 1 of the destinations and then select sources to make takes.





SoftPanel 2 Workstation Distribution

1. Place the entire Softpanel 2 folder (found on c:\usi in desired location) on the network where the workstations and the SC4 have access. The UCON program should also be run from this location.
2. Build the panels using the Softpanel config program and save them to the controller folder previously created in the Softpanel 2 installation process.
3. Create shortcuts of the newly created panels on the Softpanel remote workstations. The file will have a .pnl extension.
4. Associate the soft panel shortcut to the Softpanel.exe on the network server.
5. If the remote workstations are on a different network than the SC4, a gateway may be needed as well as changing the subnet mask. In this case refer to Appendix D of this guide.
6. When changes are made to the src/dst tables in the SC4 via UCON, they will automatically be sent to the export file that was created in the Softpanel 2 installation process. You will then import that file using the Softpanel 2 configurator that will then update all of the panels that were previously created as needed.
